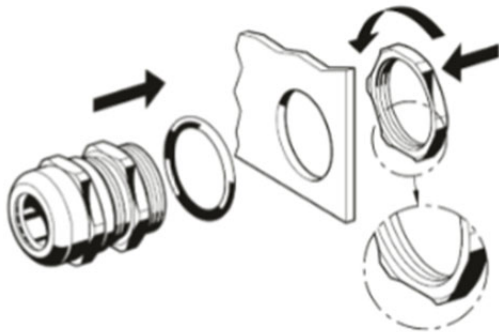


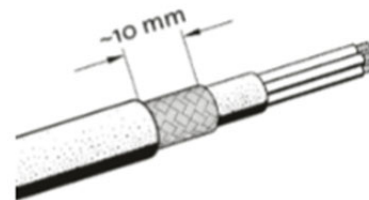
EMC Gland Instructions for Type II Glands

To install an EMC cable gland remove approx. 5 - 10 mm (0.20 - 0.39) of the insulation of the cable. Insert the cable in to the cable gland and adjust it without the contact elements touching the braiding. Tighten the cap and conductivity will be established. The design of the contact elements will adapt to different cable diameters according to the clamping range of the cable glands. Since the clamping insert of the cable gland is as long as the gland itself electrical shortcuts between the body and individual wires will be avoided.

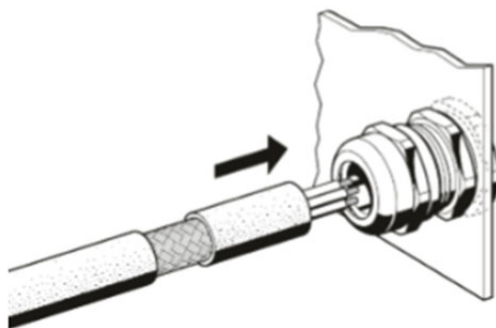
Tightening the dome nut will have three different effects: The cable will be centered in the cable gland, the chloroprene seal will ensure IP 68 protection, and the design of the dome cap will provide appropriate strain relief. All is done by just one turn of the dome cap. Even uninstalling the cable is easy; open the dome cap and pull the cable out of the cable gland together with the insert, which can then be removed easily.



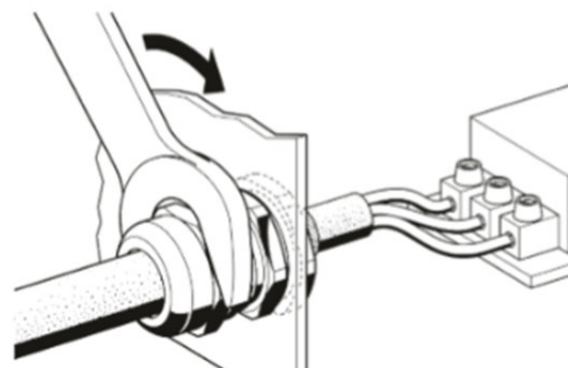
Tighten the cable gland to the housing



Remove outer sheath of shielded cable



Insert cable until EMC spring



Lock and tight the cap